



# LUNAX<sup>®</sup> PORTA

Frameless fire resisting all glass door for interior application  
EI60 - EI30 - Non-fire resistant

---



**vetrotech**  
SAINT-GOBAIN

Characterised by its minimalistic design, **LUNAX® PORTA** fully glazed fire resisting doors meet the highest architectural expectations by offering doors with **maximum transparency combined with fire resistance** in interior application.

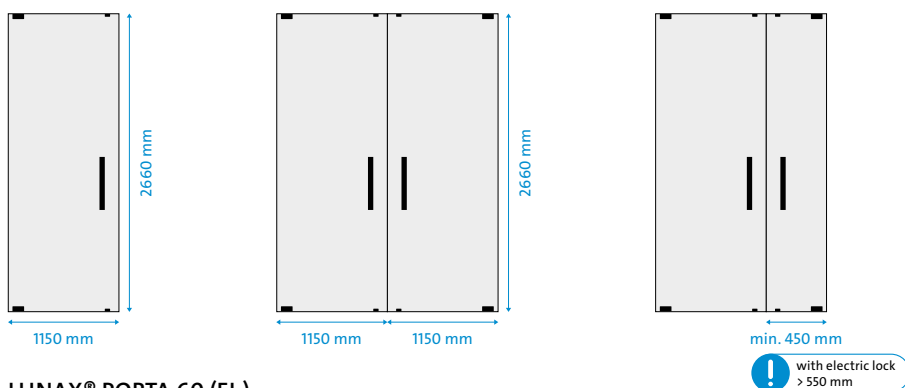
**LUNAX® PORTA** fully glazed fire resisting doors with frameless door leaves are self-closing single or double action doors enhancing the architecture of new build and renovation projects. The symmetrical pivoting system & door design allows the door to open in both directions.

## ADVANTAGES OF LUNAX® PORTA DOORS

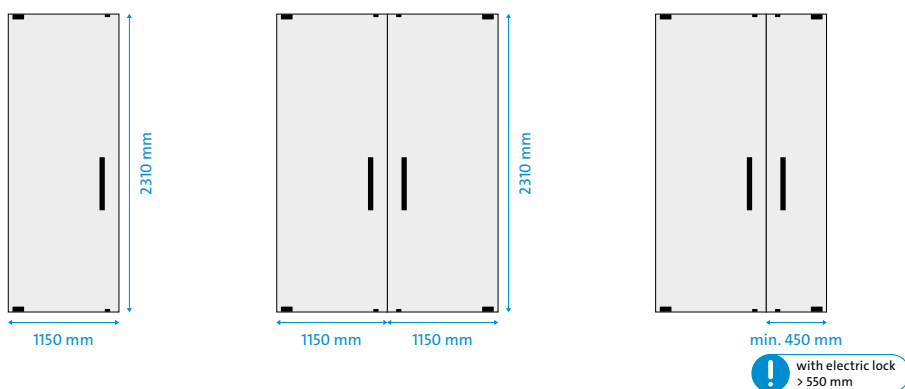
- **Stylish and minimalistic** fire resisting all glass door with four characteristic discrete clamps
- Classifications **E, EW and EI** (30 and 60)
- **Single and double action mechanism** (opening in both directions)
- Door leaf based on **CONTRAFLAM® EN 14449** (laminated safety glass)
- **Superior UV-stability** (5000 hours according to EN ISO 12543-4)
- Proven mechanical **durability** (200,000 cycles; C5 according to EN 16034)
- **Non-fire resistant** double action door with same design that provides a consistent unique look to the doors with fire resistance properties

## MAXIMUM APPROVED DOOR LEAF DIMENSIONS

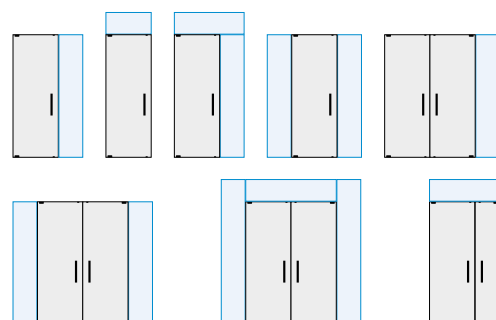
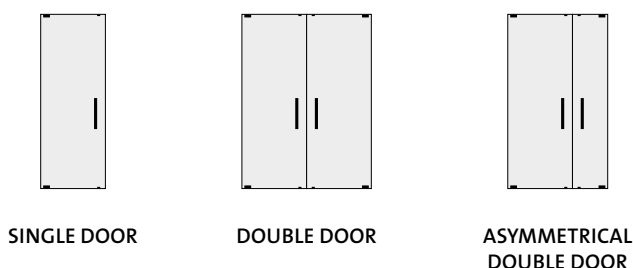
### LUNAX® PORTA 30 (EI<sub>1</sub>/EI<sub>2</sub>)



### LUNAX® PORTA 60 (EI<sub>2</sub>)



## CONFIGURATIONS



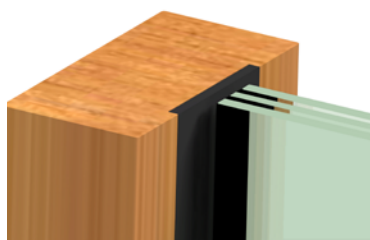
## PERFORMANCE CLASSIFICATION



National regulation can vary. Please contact your local sales representative for more product details available in your country.

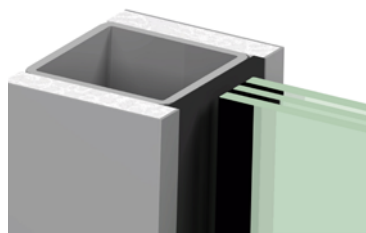


## FRAMES AND SUPPORTING CONSTRUCTIONS



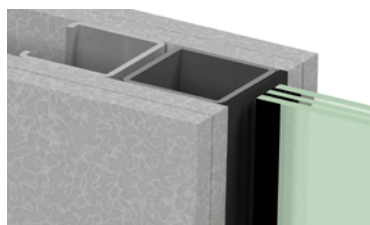
**TIMBER** (hardwood)

- Sustainable wood (PEFC/FSC certified)
- Intumescent strip



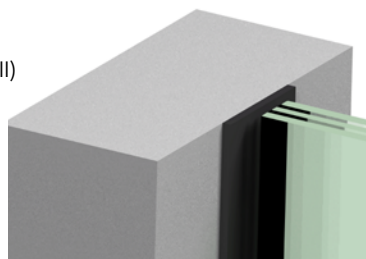
**HYBRID SYSTEM**

- Rectangular steel tube
- Calcium silicate board
- Finish metal clad
- Intumescent strip



**FLEXIBLE SUPPORTING CONSTRUCTION** (Gypsum drywall)

- Gypsum board
- Metal drywall stud
- Steel/timber profile
- Intumescent strip



**AERATED CONCRETE/ CONCRETE** (EI 30 only)

- Concrete wall
- Intumescent strip

## LUNAX® PORTA ACCESSORIES

### Handles (*K, T and S model*)



Each in three different lengths (custom handles on request)



Electrical

### Locks



Mechanical



Electromagnetic

### Hold-open device



Electromagnetic Hold-open

### Door closers



DORMA/GEZE floor springs with/without hold-open function (right selection based on door leaf weight)

### Door stop



Applicable at the top of the door frame

**LATEST AVAILABLE ACCESSORIES**  
Please check our datasheet center or contact our sales technicians

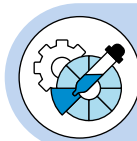


## FEATURES & CUSTOMISATION

Glass panes of door can be exchanged by **SGG DIAMANT® glass** upon request to make use of its advantages, namely its perfect clarity, improved colour rendering and more natural light. **LUNAX® PORTA** can be manufactured with individual (RAL) colours for fittings, handles and customized handle shapes. Its glass can be adapted by application of silk screen printing on the surface or an edge frit. Decorative films in any design and colour can also be applied on the glass door leaf after installation without any technical restrictions.

In addition to fire resisting **LUNAX® PORTA** door, a **non-fire-resisting version** with same accessories and sizes available for fire resisting **LUNAX® PORTA**, can also be realized. As a result, all glass doors with and without fire protection in a specific project can have the same look.

An expansive network of Authorised Installers trained by **Vetrotech** is ensuring hassle-free mounting, flawless functionality and regular maintenance of door leaves and hardware. Authorised installers in your area can be advised by the local **Vetrotech Saint-Gobain** sales office.



“FRAMELESS & UNCOMPROMISING”



#### CONTACT US

We are delightful to bring light and safety into your next project.

For more product or general inquiries, please fill in this form: [vetrotech.com/contact-us](https://vetrotech.com/contact-us)

#### Vetrotech Saint-Gobain International

Bernstrasse 43  
3175 Flamatt  
Switzerland

For more information visit us under  
[vetrotech.com/lunax](https://vetrotech.com/lunax)

**LUNAX® PORTA** fire resisting doors reliably ensure the required protection levels in case of fire and human impact safety, combined with creative design freedom. Thanks to our unrelenting commitment to innovation, we are offering our customers fire resisting fully glazed doors which are tailored to suit nearly every imaginable application. Natural light and high transparency have become crucial elements in contemporary architecture. With **CONTRAFLAM®** glass as a major part of a **LUNAX® PORTA** door, you can combine optimum fire safety with maximum light in combination with various frame and supporting constructions: in timber, steel, dry-wall, brickwork, and concrete. With **LUNAX® PORTA**, we strive to design protective and aesthetic fully glazed fire doors, in direct collaboration with you, to meet the expectations for your high-end projects.