

# SECURIT® ALARM

PRODUCT INFORMATION

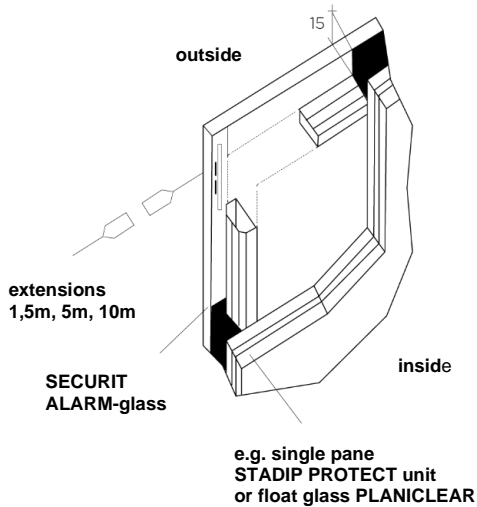
---

ON THE SAFE SIDE

[vetrotech.com](http://vetrotech.com)

**vetrotech**  
SAINT-GOBAIN

## SECURIT® ALARM in combination with Fire-Rated & High-Security Glass



**SECURIT ALARM** is a SECURIT glass pane made of toughened safety glass or laminated safety glass consisting of toughened glass and has a screen-printed and sintered electrical conductor loop that is connected to a building alarm system. If this pane shatters, e.g. by force, the conductor loop is interrupted and an alarm is immediately triggered (VdS test number G 115014). The alarm loop can be used for double and triple insulating glass (**CLIMAPLUS®**, **CLIMATOP®**), as single glazing with laminated safety glass **STADIP®** and with burglary, bulletproof and explosion-proof glazing **STADIP® PROTECT**, **VETROGARD®** and **POLYGARD®** as well as combined with fire-rated glazing **CONTRAFLAM®**, and used in doors or partition walls and facades.

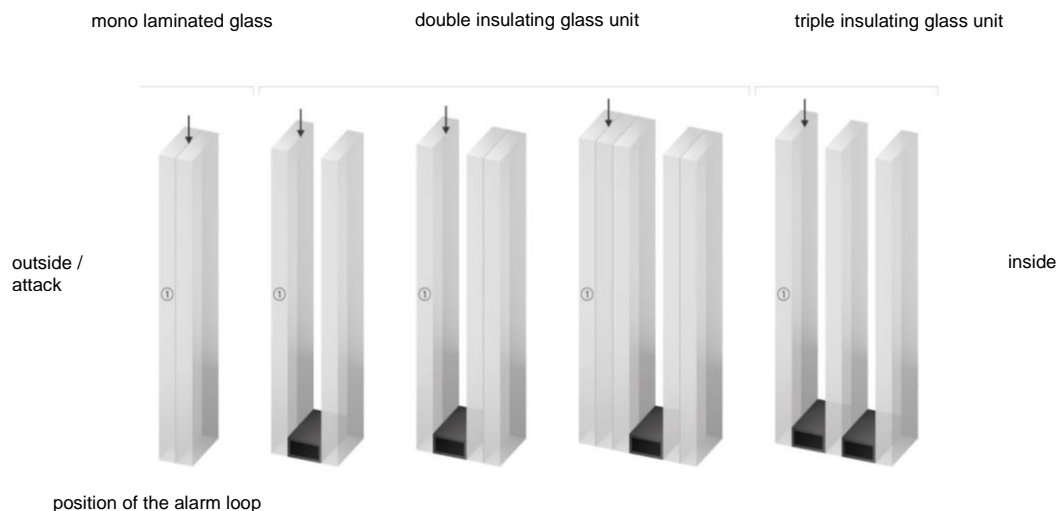
- ✓ Quicker response time in case of attack compared to any other solutions;
- ✓ The alarm is only triggered if, for example, during a real attack the glass breaks. Additional alarm devices might trigger in an undesired way by a simple shock, for example;
- ✓ We always promote imperceptible protection through our glass.

## SECURIT ALARM product make-up

Positioning of the alarm glass pane:

### 1) SECURIT ALARM in combination with VETROGARD and STADIP PROTECT

The alarm-triggering glass pane is positioned as the first target on the attack side, with the alarm loop in position 2. The glass make-up results from the functional requirements and is supplemented by the alarm loop. At customer's request, a visible, ceramic print, so-called "dummy", can be applied for additional deterrence. The following product make-ups are possible:

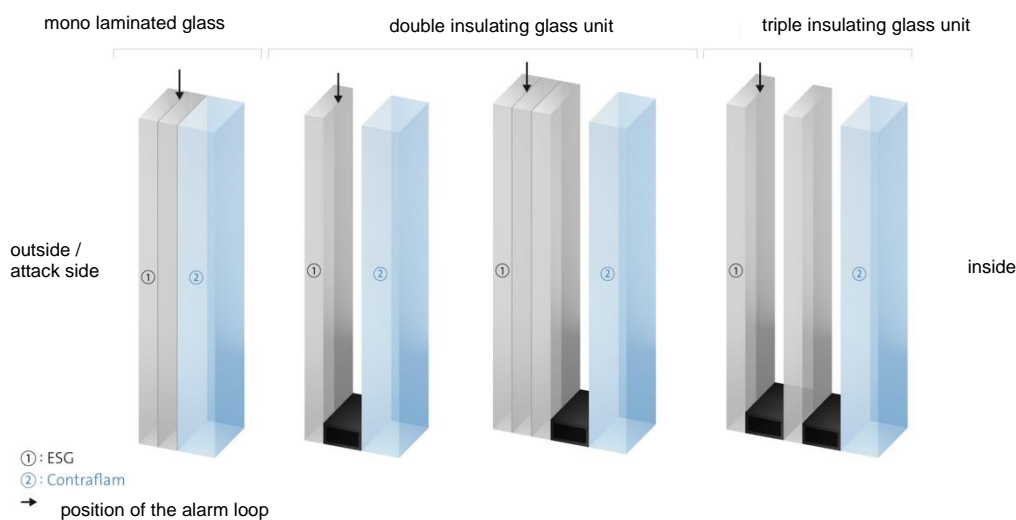


## 2) SECURIT ALARM in combination with POLYGARD

In principle, the same conditions apply to the combination with VETROGARD and STADIP PROTECT. In addition, the alarm-triggering pane can be combined with POLYGARD to an insulating glass. POLYGARD mono make-ups are supplemented by a SECURIT ALARM Laminated Glass with a thickness of at least 11.5mm. For specially shaped glass formats, at least one straight edge is required.

## 3) SECURIT ALARM in combination with CONTRAFLAM Fire-Rated Glass

In principle, the same conditions apply to the combination with VETROGARD and STADIP PROTECT. The additional combination of the alarm-triggering pane with CONTRAFLAM to an insulating glass is possible. In the case of CONTRAFLAM mono make-up, the outer glass of the CONTRAFLAM unit is replaced by a SECURIT ALARM Laminated Glass with a thickness of at least 11.5mm.

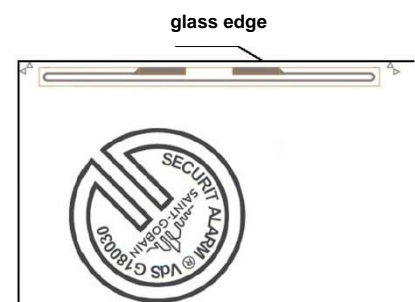


## SECURIT ALARM Make-Up Options

All panes consist of toughened safety glass with a glass thickness of  $\geq 6$  mm, or a laminated safety glass consisting of toughened safety glass with a minimum of 11.5 mm.

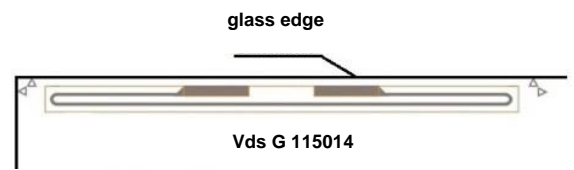
### SECURIT ALARM – Edge Connection ASRK Type VD

- Edge parallel top / bottom, left or right with dummy
- Parallel to the edge, concealed by edge seal
- Dummy as a deterrent. Distance to the glass edge: approx. 25 mm x 25 mm
- For combinations with laminated safety glass, multi-pane insulating glass or in combination with CONTRAFLAM.



**SECURIT ALARM – Edge Connection ASRK Type V**

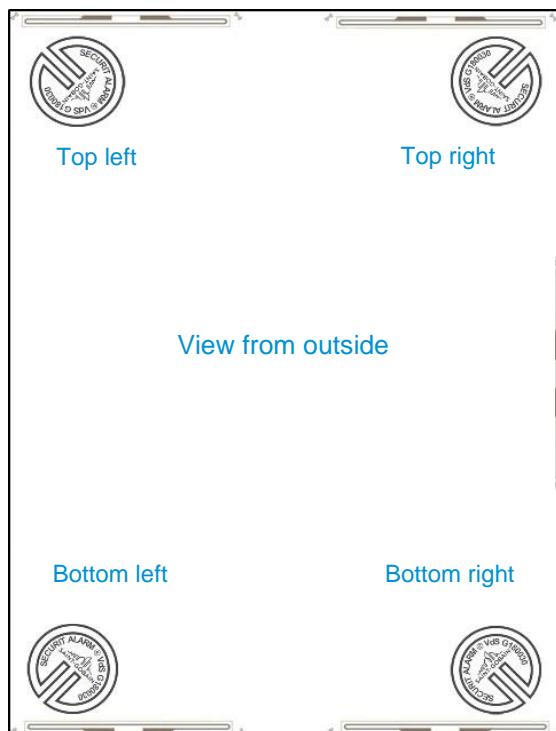
- Edge parallel top / bottom, left or right execution not visible in the edge seal
- For combinations with multi-pane insulating glass or in CONTRAFLAM
- For combinations with laminated safety glass
- VDS identification number on the glass or on the spacer in combination with insulating glass.



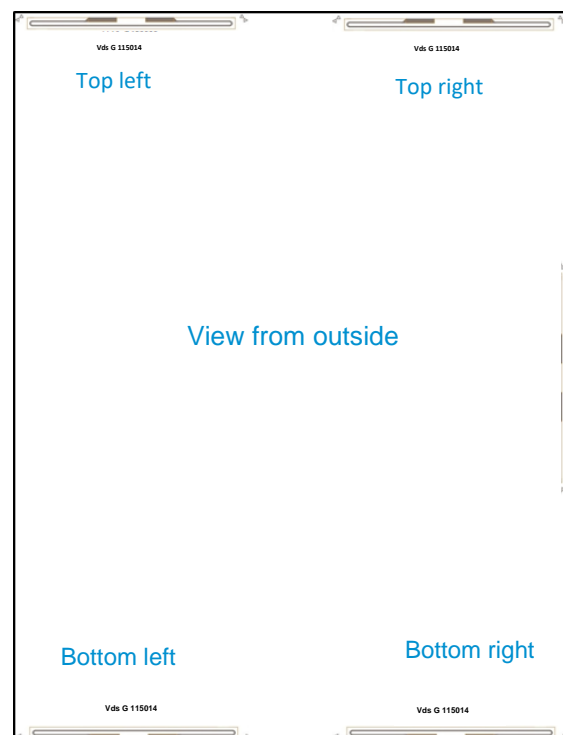
**SECURIT ALARM – Positioning Options of Edge Connection**

- We recommend arranging the conductor loop preferably in one of the upper corners.

**ASRK Type VD**



**ASRK Type V**



## Connection Cable and Electric Resistance

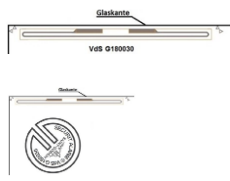
The connection resistance of SECURIT ALARM does not depend on the glass surface and can be up to 1,8 ohms depending on the version. The resistance measured at the factory is stated on the window sticker. For the design of the alarm system, this system has the advantage that each pane - regardless of the area size - has the same resistance. The maximum current load must not exceed 0.1 A.

## Design Variants

Approved Components / Pre-Products for SECURIT ALARM:

- Uncoated Float glass: Planiclear, Parsol and Diamant
- Coated Float glass: Planitherm II, COOL-LITE II, ECLAZ II, oder ECLAZ ONE II
  - With low-e coatings, the loop is always in the edge deleted area

*Note: panes coated with EASY Pro are only available as TYPE V version.*

Loop resistance ASRK TYPE-V and ASRK TYPE-VD V= Verdeckt (concealed), D= Dummy		0,8 Ω – 1,8 Ω*
---	--	----------------

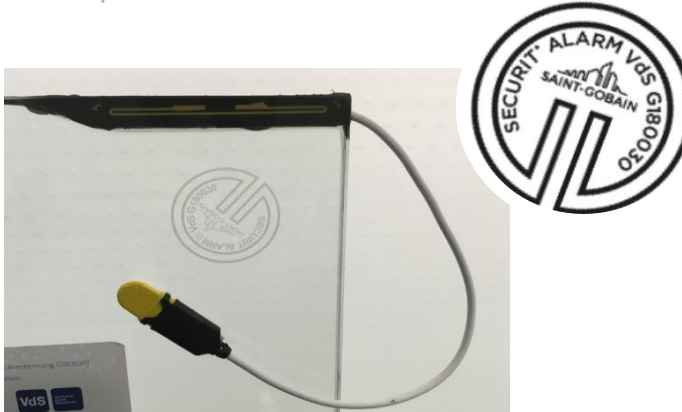
\* For measurements and tolerances of the resistance, see "Checking the alarm loop resistance before installation" in the chapter 'Installation'

## Dummy:

*Example: Insulating glass with Dummy*



*Example: Laminated Glass with Dummy*



### Glass Installation in Frame

All setting blocks must be positioned at least 100 mm away from the glass corners. The expansion of the alarm loop after breakage of the SECURIT ALARM panes must not be hindered by the glass blocking. The cable exit from the edge seal must not be mechanically stressed.



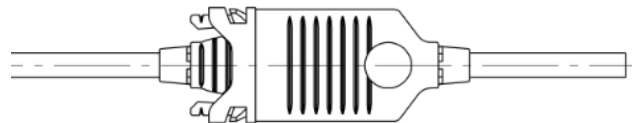
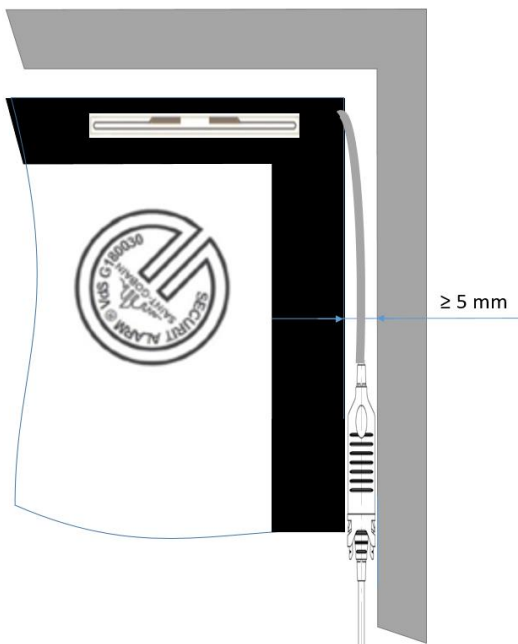
### Cable Connection

Each glazing element consists of the actual glass unit with the alarm loop and an approx. 300 mm long connection cable with a flat plug. To avoid damage, the connection cables are attached to the glass pane with adhesive tape.

Extension cables with matching sockets in lengths of 1.5 m, 5 m and 10 m are available for individual length adjustments.

### Plug Connection

The plug connection must be positioned in the glass rebate and requires a distance between frame and glass edge (rebate height) of  $\geq 5$  mm.

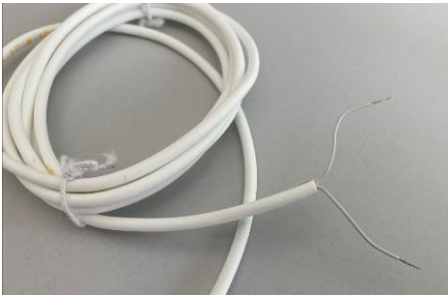


## Integration into the Burglar Alarm System

**Note: when integrated in a VdS-approved burglar alarm system, the contractor carrying out the work is responsible for correct installation and compliance with the relevant regulations.**

In addition to the regular incoming goods inspection, every SECURIT ALARM pane must be checked for function before and after installation by measuring the electrical resistance.

The cable connection of the alarm loop consists of a 4-wire cable with a plug connection, two cables forming the disruption (or so-called sabotage) line and the other two being connected to the alarm loop.

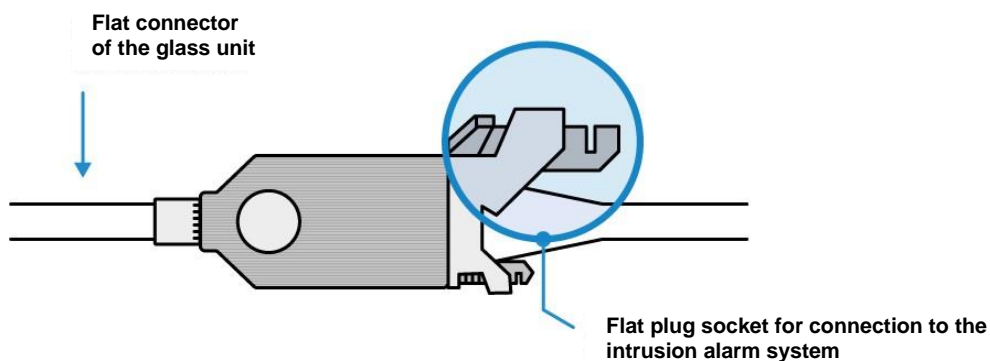


For simplified checking and measurement of the loop resistance, a special test cable can be ordered as an alternative (item no. 3840700). This cable is connected to the socket on the glass pane. Different than the regular extension cables, the test cable has no locking blades so that the plug connection can be easily released again. Otherwise, attempting to disconnect a regular extension cable could damage the alarm loop.



The 1.5 m long test cable only has the two connections of the alarm loop, so that the loop resistance can be measured directly with an ohmmeter. The measured value must be between 0,8 ohms and 1,8 ohms and may deviate from the ohmic value noted on the label due to different line resistances and different measuring devices (the resistance in  $\Omega$  on the window label is the value up until the plug connection).

The cable and the cable connection must not be damaged, jammed or kinked when being placed in the frame system and subsequently continued to the burglar alarm system. The cable must be laid in a loop inside the frame rebate area before and after the connector to allow for movement, avoiding strain on cable and plug respectively. The plug connection should preferably be laid in the vertical glass rebate space. Plug and socket must be plugged together until the retainer blades click into place and a permanent and moisture-proof connection is created. The connector system and the extension cable for connection to the alarm system are part of the product approval, other connections are not permitted.



### Applicable Standards of Product Approval

<b>VdS 2311</b>	Intrusion Alarm System Guidelines – <i>Planning and Installation</i>
<b>VdS 2270</b>	Intrusion Alarm System Guidelines – <i>Alarm Glass Part 1 – Requirements</i>
<b>VdS 2317</b>	Intrusion Alarm System Guidelines – <i>Alarm Glass Part 2 – Tests</i>
<b>VDE 0833</b>	Alarm systems for fire, intrusion and hold-up
<b>DIN 57833</b>	Alarm systems for fire, intrusion and hold-up

Glass Label

## SECURIT® ALARM

### Security by intrusion detection systems (VDS recognition G115014)

Requirements for glazing and electrical installation

**Transport**  
Mechanical stresses on the plug and on the cable and the placing of the ALARM panes on the cable connections must be avoided.

**Glass Installation**  
For the installation of the glazing the general glazing guidelines as well as the DIN standards and technical guidelines of the trade associations and institutes must be observed. The cable connection must not be damaged pinched or kinked and must be laid with strain relief.  
In order to keep the moisture load on the plug connection, it should preferably be installed in the vertical rebate space.

**Electrical connection Alarm Securit**  
Each SECURIT alarm pane is equipped with an approx. 30 cm long connection cable with a flat plug, which has to be connected with a prefabricated extension cable with a suitable flat plug socket. For the connection of the alarm glass to the alarm system only the approved link connection cable and the appropriate extensions may be used. Any manipulation of the cables and the connector will invalidate the VdS approval.

**Plug connection configuration**  
The plug connection must be made in such a way that a permanent and moisture-protected connection is made. The plug and socket must be plugged together until the locking pawls engage. Other connections are not permitted.

**Loop resistance measurement:**  
Before installation, the loop resistance must be checked and documented. The measured value must be between 0,8 Ω and 1,8 Ω and may deviate from the factory measured ohm value on the label due to different line resistances and different measuring devices.



Loop resistance, measured, factory setting

Date

Inspector final controle

Loop resistance measured before installation

Max. Power load  
0,1 Ampere

Flat plug of the glass unit



## SECURIT® ALARM



Date 30.06.2025

## Packaging

Standard on a wooden A-frame with the alarm loop facing up:



## Contact us

We are delighted to bring light and safety into your next project.

For technical inquiries, please fill in this form: [vetrotech.com/contact-us](https://vetrotech.com/contact-us)

### **Vetrotech Saint-Gobain International**

Industriestrasse 44  
3175 Flamatt  
Switzerland

For more information, visit our website: [vetrotech.com](https://vetrotech.com)