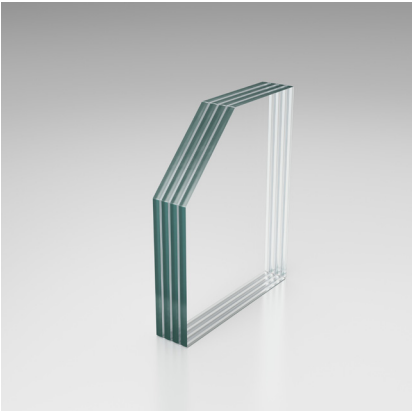


VETROGARD ATTACK RC2 anti-panic

Attack resistant security glass



Sample configuration only - Non contractual picture

Classification



Attack
Attack resistant glazing intended to hold back forced entry for a specific time.

Technical Specifications

Resistance class

Impact resistance
Application conditions
Hazardous material contained
ID-No
Dimensional tolerances (width/height)

RC2 anti-panic, glass attack (EN 1627) P4A (EN 356)

1(B)1 (EN 12600)
See Vetrotech Quality and Application Guidelines. Verify the side of attack.
None
RC2.21 AP
≤1000 mm: -1/+2 mm ≤2000 mm: -1/+2 mm >2000 mm: -1/+3 mm

Product / CE / DoP-Code

Nominal thickness
Maximum glass size
Thickness tolerance
Weight
Sound reduction Rw (EN 140-3)
Light transmission (EN 410)
Light reflection pL ext./int. (EN 410)
U value, W/m²K (EN 673)
g value (EN 410)

PLANICLEAR

21 mm
9.6 m² (2400 mm / 4000 mm)
±1 mm
45 kg/m²
36 dB
86%
8% / 8%
4.8
0.72

DIAMANT

21 mm
9.6 m² (2400 mm / 4000 mm)
±1 mm
45 kg/m²
36 dB
89%
8% / 8%
4.8
0.77

Additional Information

DoP: Declaration of Performance - available upon request from your sales office.
NPD: No Performance Determined